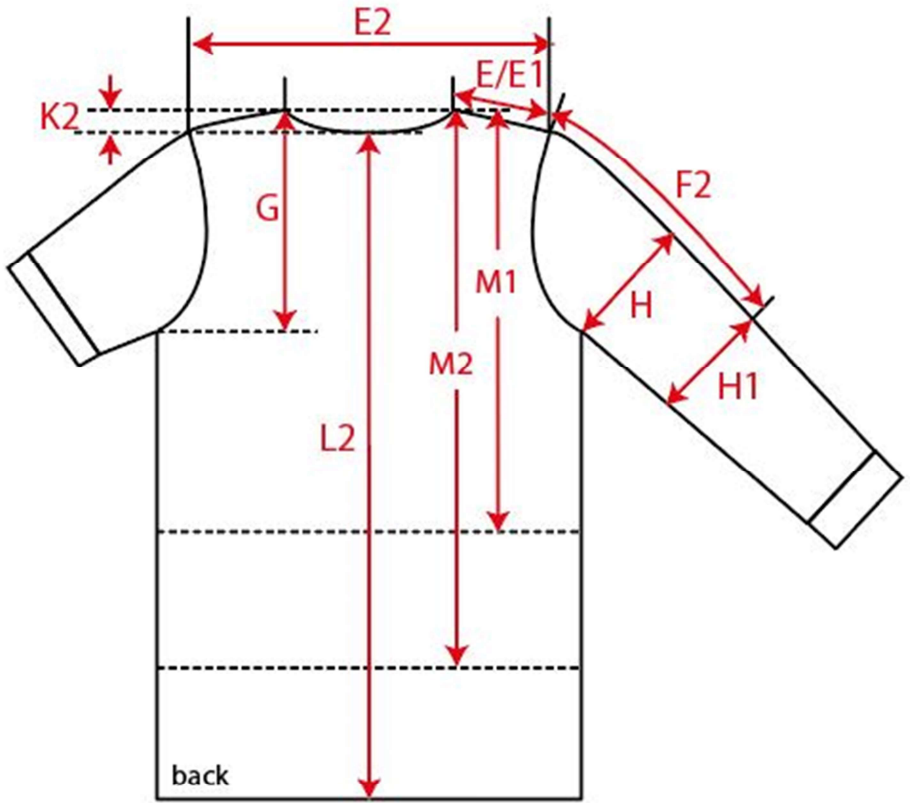
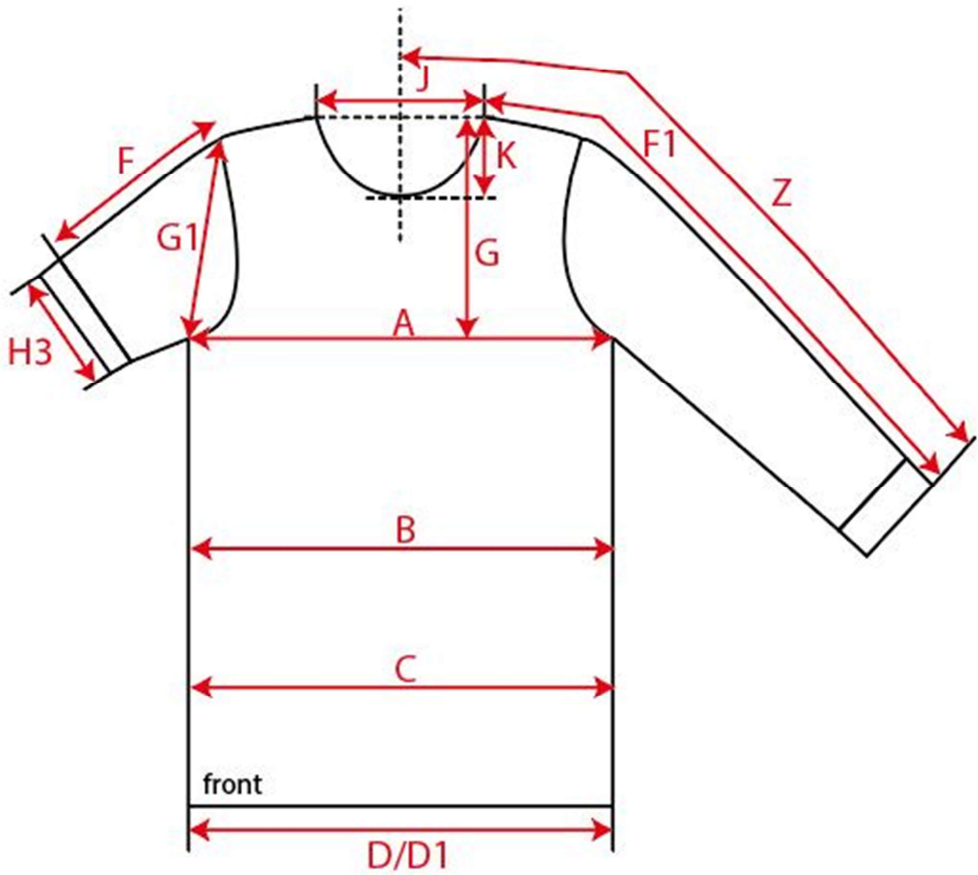


Measurement Sketch



| | | | |
|------------|--|--------|----------------|
| ORDER | SEASON | CLIENT | BRAND |
| | SS22QS | n/a | Urban Classics |
| STYLE CODE | STYLE NAME | GENDER | SUPPLIER |
| TB4755 | Ladies Oversized Diamond Quilted Bomber Jacket | Female | 72503 |



Style Measurement View for Client



| ORDER | SEASON | CLIENT | BRAND |
|------------|--|--------|----------------|
| | SS22QS | n/a | Urban Classics |
| STYLE CODE | STYLE NAME | GENDER | SUPPLIER |
| TB4755 | Ladies Oversized Diamond Quilted Bomber Jacket | Female | 72503 |

Basic Measurement Chart Base Size

| - | Measurements (values) | XS | S | M | L | XL | XXL | 3XL | 4XL | 5XL | Tol. +/- | Comment |
|---|--------------------------------------|------|------|------|------|------|------|------|------|------|----------|---------|
| M | front length from HSP | 63,0 | 65,0 | 67,0 | 69,0 | 71,0 | 72,0 | 73,0 | 74,0 | 75,0 | | |
| A | 1/2 chest width | 60,5 | 63,0 | 65,5 | 68,0 | 70,5 | 74,5 | 78,5 | 82,5 | 86,5 | | |
| D | 1/2 hem width | 43,5 | 46,0 | 48,5 | 51,0 | 53,5 | 57,5 | 61,5 | 65,5 | 69,5 | | |
| F | sleeve length from shoulder (set in) | 54,0 | 54,5 | 55,0 | 55,5 | 56,0 | 56,5 | 57,0 | 57,5 | 58,0 | | |
| J | neck width | 18,4 | 19,0 | 19,6 | 20,2 | 20,8 | 21,7 | 22,6 | 23,5 | 24,4 | | |